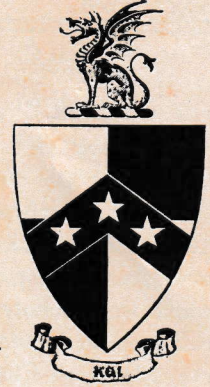




# THETA DATA



*Theta Chapter of Beta Theta Pi Fraternity  
Chartered 1853  
Ohio Wesleyan University*

Volume 2, No. 1

May, 1962

## Thetas Tops In Scholarship

### BULLETIN

Results released by the University listed Beta Theta Pi first among the 14 fraternities in scholarship during the first semester, 1961-1962. Theta Chapter compiled a 2.6287 average while finishing first.

Individual achievements were also many and varied. Frank M. Szasz '62, Bucyrus, received the top honor when he was initiated into Phi Beta Kappa this spring. Beta also placed four brothers on the Dean's List for the first semester. Several Betas were also initiated into several of the other honor societies on campus. Those who were initiated over the last two years included Alan G. Pratt '64, Manchester, Conn., (sophomore honor society); James C. Tennison '62, LaGrange, Ill., (psychology); Frank W. Schneider, '63, Derby, Conn., (psychology); Melvin J. Trumble '62, Dayton, (political science); Michael A. Sommer '62, Wabash, Ind., (chemistry, men's music); Bruce R. Elder '62, Hingham, Mass., (chemistry, journalism); Robert C. Moyers '63, Steubenville, (education, journalism), and Szasz (history, journalism).

Wesleyan University Press in Columbus is employing the talents of ROBERT CANRIGHT '52. Bob lives at 204 Euclid Avenue, Delaware.

## Undergrad Spirits High In New House

By G. A. Feld '63  
President  
Theta Chapter

This issue marks the coming of a long-awaited event; the republication of our Theta Data, the last issue of which was printed in 1957. Through hard work by the house corporation and the undergraduate chapter, we hope to bring about a closer relationship between the alumni and the undergraduates. With the publication of this issue, we are taking our first step towards this new goal. As president, I will pledge the complete support of the undergraduate members, and express our appreciation to the house committee for its fine work.

Theta chapter at Ohio Wesleyan is in excellent shape. Through the fine effort of our treasurer Bruce Elder '62, during the past two years Theta chapter has received an excellent financial rating from the general fraternity. Last semester, we ranked third out of fourteen fraternities scholastically, and placed second in the highly competitive intramural program.

Moving into our new house in September was a long-awaited thrill for all of us, and the spirit of Theta chapter has continued to rise since we became the newest member of OWU's fraternity

(Continued on Page 2)

## Alumni Affairs

by Robert S. Neff '53

Those of you who were unable to join us at Homecoming last October really missed a wonderful opportunity to visit with over two hundred Alumni and guests who participated in the dedication of your new Beta House. The results of our many years of hoping, working, and planning were warmly applauded, in spite of the fact that some of the furnishings (mainly beds and dressers) had not yet arrived.

Your Board of Trustees is very appreciative of this avalanche of interest and participation by the wide segment of alumni who were represented. We earnestly desire that it continue and expand. In a recent joint meeting of the Board of Trustees and chapter representatives, arrangements were made for better and more consistent communications with Theta alumni so as to encourage their sustained active interest in such functions as Fall Homecoming and initiation at Winter Homecoming. The Board has provided funds for two Theta Data mailings in the remaining academic year, with plans to continue these mailings regularly in the future, plus retention of professional counsel in improving these publications, alumni interest, and participation. We intend to keep you

(Continued on Page 4)



## Chapter Shorts

by Bob Moyers '63

The work of freshman, Keith L. Moore '65, Urbana, recently saved the chapter over \$300 when he completed making a beautiful new stereo unit, the parts of which were donated by his father.

The new piano, donated by the Mothers' Club last spring, was completely paid for by our moms. Theta Chapter again offers its sincere thanks for such a wonderful gift. . . . The Theta Chapter House Corporation gave the chapter \$2,000 to finish tiling and decorating the basement. . . . Thanks also are in order to David F. Sloane '63, Columbus for the ping-pong table that he donated and the pool table that we were able to buy at a low price from his uncle.

THETA DATA, Published regularly by Theta Chapter of Beta Theta Pi Fraternity at Ohio Wesleyan University for its alumni members and friends.

News and picture contributions are welcome at all times. Address all contributions to Alumni Relations Officer, 9 Williams Drive, Delaware, Ohio.

### Theta Chapter Alumni Association

<b>President:</b>	Frank Piersol '37	Ostrander
<b>Vice President:</b>	William O. Robinson '49	Lyndhurst
<b>Secretary-Treasurer:</b>	Henry S. Hubbard '49	Columbus
<b>Alumni Relations Chairman:</b>	Robert S. Neff '53	Dayton
<b>Alumni Adviser:</b>	Thomas Farraday '49	Delaware
<b>Trustees:</b>	Hal Fausnaugh '48	S. Euclid
	Morris Hollenbaugh '46	Delaware
	W. O. Littick '50	Zanesville
	W. A. Long '51	Middletown
	James Wyant '51	Delaware
<b>Undergraduate Officers</b>		
<b>President:</b>	George A. Feld '63	Scarsdale, N.Y.
<b>Vice President:</b>	T. Clark Dove '63	Shelbyville Ill.
<b>Pledge Trainer:</b>	Richard C. Slosek '64	Ludlow, Mass.
<b>Corresponding Sec.:</b>	John A. Neff '64	Shadyside
<b>Recording Sec.:</b>	Keith Moore '65	Urbana
<b>Rush Chairman:</b>	James A. Locke '64	East Liverpool
<b>Scholarship Chairman:</b>	Bill Conner '65	Pittsburgh, Pa.



NEW OFFICERS of Theta Chapter for 1962. Pictured left to right: Scholarship Chairman Bill Conner '65, Pittsburgh; Pledge Trainer Richard C. Slosek '64, Ludlow, Mass.; Vice Pres. T. Clark Dove '63, Shelbyville, Ill.; Pres. George A. Feld '63, Scarsdale, N.Y.; Rush Chairman James A. Locke '64, East Liverpool, Ohio; Corresponding Sec. John A. Neff '64, Shadyside, Ohio, and Recording Sec. Keith Moore '65, Urbana, Ohio.

## Beta Sports

Theta Chapter athletes are continuing this year as in the past to keep Beta's name prominent in varsity and intramural competition.



Melvin J. Trumble '62, Dayton,

Playing major roles on the Ohio Wesleyan varsity athletic teams during the fall and winter seasons were Melvin J. Trumble, '62, Dayton, who earned a 2nd

team berth on the Ohio Conference football team; Frank W. Schneider '63, Derby, Conn., who started at halfback on the soccer team, and James R. Manchester '65, Canfield, and David F. Sloane '63, Columbus, who were the two divers on the swimming team.

During the upcoming spring season the Betas will again be well represented on four of the five varsity teams.

### President's Letter (cont.)

row. We initiated thirteen excellent freshmen, and have already noticed their eager contributions to the house. We now have two second semester pledges, and are looking forward to a fruitful fall rush program.

The spirit of Theta chapter is very high, and while we are continually moving forward to new and better years, we want to keep in close contact with our long and impressive list of Theta Beta alumni. I would like to remind all alumni that the doors of Theta chapter are always open.



## Alumni Personalities

## Meet John Summers '07 Outstanding Theta Beta

"Awarded to John Summers in recognition of his many years of distinguished service to Beta Theta Pi."

Those words are inscribed on a plaque on the wall of John Summers' law office in Columbus, and they are an apt description of the role he has played in the affairs of Theta chapter and the General Fraternity. The plaque was presented to John in 1951 by the Central Ohio Beta Alumni Association, but the description is just as true today as it was 11 years ago.

Brother Summers has done many things for Theta chapter, but his most important achievement came almost by accident, out of an article he wrote for the Beta national magazine. In the years immediately following his graduation from Ohio Wesleyan, John became acquainted with Almond D. Cochran, '02, a Theta alumnus, and lawyer who was very active in the Episcopal church. Later on, when brother Cochran moved to Oklahoma, the two men kept up a correspondence that continued over the years. Cochran, who later became a judge, had invested his money in Oklahoma oil lands and the investments made him a millionaire. However, when he died he left nothing for the fraternity in his will.

When John learned of Cochran's death, he wrote a letter of condolences to his sister Ena Cochran. The two corresponded for a while, as John gathered material about Almond Cochran for an article he was writing for the Beta national magazine. During the course of their correspond-



John Summers '07

ence, John told Ena Cochran about the Ohio Wesleyan Educational Foundation of Beta Theta Pi, which he helped to found. She became interested in it, and asked about its work and why it was set up. John described the foundation for her, but never made any outright request for a contribution from Miss Cochran.

Nevertheless, Ena Cochran must have been impressed by what John Summers had told her, for when she died, she left 50 thousand dollars to the foundation as a memorial to her brother. This gift went a long way towards making Theta chapter's new house a reality.

Beta Theta Pi is not the only organization to which John has given many years of distinguished service. He has been a shiner since 1931, and held every office in the Aladdin Temple, his last one being potentate in 1945. He was the man who spearheaded the organization of the Aladdin Crippled Children's Hospital

Association, which now has over \$1,600,000 in assets. Income from the foundation is used for the rehabilitation of crippled children. John still serves as attorney for the Aladdin Temple, and as attorney and trustee for the Crippled Children's Association.

John graduated from Ohio Wesleyan in 1907, and from the Cincinnati Law School in 1910. In 1915, he married the former Louise Sanns a graduate of the Cincinnati Conservatory of Music, whom he had known since their high school days together in Gallipolis. The Summers have two Beta sons, both initiates of Theta-Delta chapter at Ohio State. James, the oldest, is a professor and head of the science department at William Woods Girls College in Fulton, Missouri. Their other son, Tom, is an accountant with the Electric Power Equipment Company in Columbus.

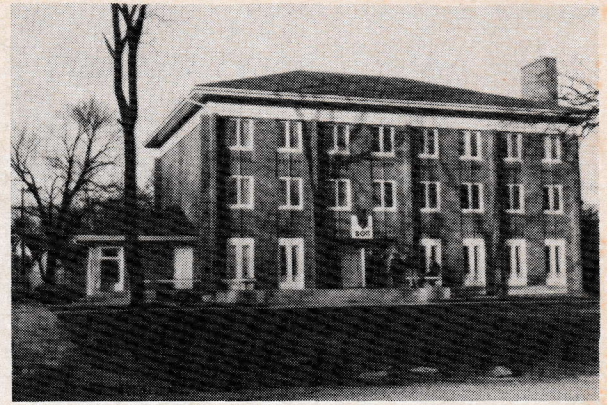
A symbol of brother Summer's active life is the two mile walk he takes every day, something that would tire many men half his age. Every night, no matter what the weather, he walks two of the four miles from his office to his home in Bexley. Mrs. Summers says: "he's been doing it ever since I can remember, and I guess he'll keep right on doing it as long as he's able". From what we know about John Summers, we're sure he'll keep it up for a long time.

DONALD W. HORNBECK '25 (LL.B., OSU), prominent Cleveland attorney, will be a lay delegate to the eighth international conference on cancer in Moscow next July. A past president and director of the Cuyahoga County unit of the American Cancer Society, he is a trustee of the Ohio division.





LIVING ROOM of the new house, as viewed from entrance hall.



NEW HOME of Theta Chapter, dedicated Oct. 28, 1961

**Alumni President's Letter (cont.)**  
fully informed, as to what is going on and how we are progressing. Your suggestions will be welcomed.

The house company has not received final figures on the total cost of house and furnishings; however, we can give you this reasonably accurate summary:

Total expenditures, exclusive of architect's fees .....	\$206,215.44
Total contributions and credits .....	\$ 99,332.62
Advanced by Ohio Wesleyan Univ. ....	100,000.00
	\$199,332.62
Total deficit payable to Ohio Wesleyan Univ. ....	\$ 6,882.82

The \$100,000.00 advanced by the University will eventually be retired from the rent paid by the undergraduate chapter residents. This rent is paid directly to the University by each individual. Maintenance of the chapter house and its furnishings (exclusive of the kitchen equipment) is charged against the rental income by the University. Architectural fees are not included above because they were paid directly by the house company from funds set aside for this purpose over several years.

The house company presently owes the university about \$6,882.82. This money can only

come from unpaid pledges and further alumni gifts. Checks should be made payable to Ohio Wesleyan University, earmarked for the Beta Theta Pi House Fund. Contributions in excess of the debt to the University will be used for Theta scholarship purposes and future capital expenditures approved by the house company. However, this is applicable only after the debt is retired.

Your house company is in sound financial condition, although it is handling considerably fewer dollars than was the case when it had rental income. Of the \$5.00 per month dues paid by each undergraduate (resident and non-resident alike) to the chapter treasurer for chapter house operation, \$2.00 is retained by the chapter for house improvement, and \$3.00 is forwarded to the house company. This house company income has no relationship to funds contributed to the university. This income will allow the house company to make those extra capital expenditures which the university does not consider essential, but which we consider necessary to maintain ours as the most outstanding chapter house on campus.

The undergraduate chapter is to be congratulated for assuming

this long term responsibility by continuing its financial support of the house company.

In keeping with this approach, your board of trustees has authorized the undergraduate chapter to spend up to \$2000.00 to "finish" the basement. All basement floors will be tiled, excluding boiler and pump rooms. The chapter room will be equipped with built-in seating facilities and will be furnished with other equipment befitting its proper use. The basement recreation rooms will likewise be "finished" attractively, thus encouraging a reduction in daily wear and tear on the more elaborate and expensive furnishings of the first floor areas.

The undergraduate chapter is doing an excellent job and is enthusiastically supporting this program to improve alumni participation. Theta needs your active interest and help in many areas: rushing assistance, attendance at alumni functions, and financial contributions. **SUPPORT YOUR CHAPTER.**

Nancy Ann, who was born November 3, 1961, is the latest arrival in the family of PETER HAUCK '52. The Haucks live at 4911 Brott Rd., Toledo 13, where Pete works for Owens-Corning.